

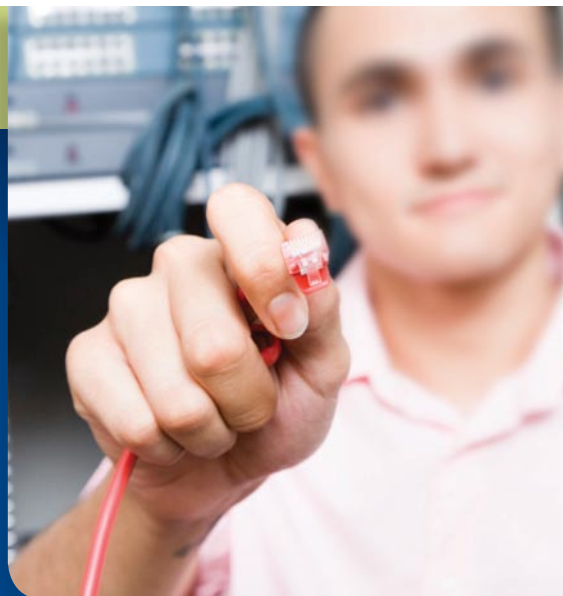
A total cabling design and installation service tailor-made to match your precise individual needs. Your project will be expertly run for smooth, seamless integration into your business infrastructure.

## Infrastructure Cabling Services

# from Symbiotic Projects

If you require professional, streamlined and well planned infrastructure cabling services, our Infrastructure Cabling Services provide a simple, single-source solution. Our Project Managers will deliver total cabling infrastructure solutions to match your precise requirements, from planning and inception through to execution and commissioning. Ensuring all projects are carried out in accordance with relevant regulatory standards, our comprehensive services include:

- Project-managing supply and installation of all types of cabling
- Mains power for single and 3-phased requirements
- Passive equipment and cable containment
- Civil engineering works required for underground duct systems



### Comprehensive support services

Underpinning our infrastructure cabling planning and installation works, we offer a portfolio of support services:

- **Pre-sales Consultancy** – one-to-one contact at the earliest stage, ensuring your requirements and our services are clearly defined. This will maximise efficiency and minimise costs for the project duration.
- **Site Surveys** - site surveys to assess the scope of the works, access existing facilities and plan the project in accordance with our findings.
- **Planning** - our survey findings are analysed so as to plan a cabling network matching your requirements.
- **Proposal** – we will produce a comprehensive presentation package setting out precisely how the installation will be undertaken. Details of site-specific criteria are fully itemised at this stage, and schematic drawings can be issued to illustrate the proposal.
- **Time frames/resources** – we will outline the anticipated duration of the installation so you can undertake any required pre-planning. We will ensure that all suitably qualified personnel are available for the duration of the project.
- **Implementation** – we will ensure that all staff and materials are despatched in accordance with agreed time frames.
- **Site Management** – we will ensure that agreed milestones are achieved via on-going direct liaison with you. We will also minimise disruption to your business, pre-empt and alleviate potential problems, and so achieve successful completion of the project.
- **Documentation** – a pre-agreed documentation format can be provided, tailored both to your needs and the installation being undertaken. This can cover elements such as block schematics, voice/data layouts on frames, cabinets or floor plans.
- **Certification** – as part of the documentation package, Certificates of Compliance will be issued in accordance with current standards and regulations such as ISO, BS EN, etc.